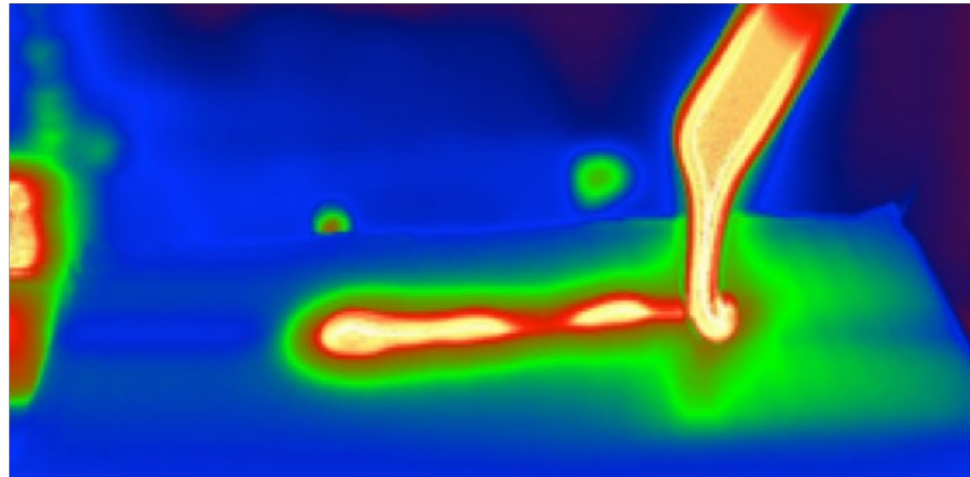


Industrial Infrared Camera

The CI series is a high-performance infrared camera for industrial applications. Long wave products use high-sensitivity Vanadium Oxide uncooled detector, which can present temperature information and measure the temperature characteristics of objects. Short wave product is equipped with InGaAs sensors, covering visible light to shortwave bands, and has built-in image preprocessing. Suitable for applications in industries such as new energy, semiconductors, and agriculture.



Rich functions, suitable for industrial scenarios



Compatible with GigE Vision standard, support GenCam protocol

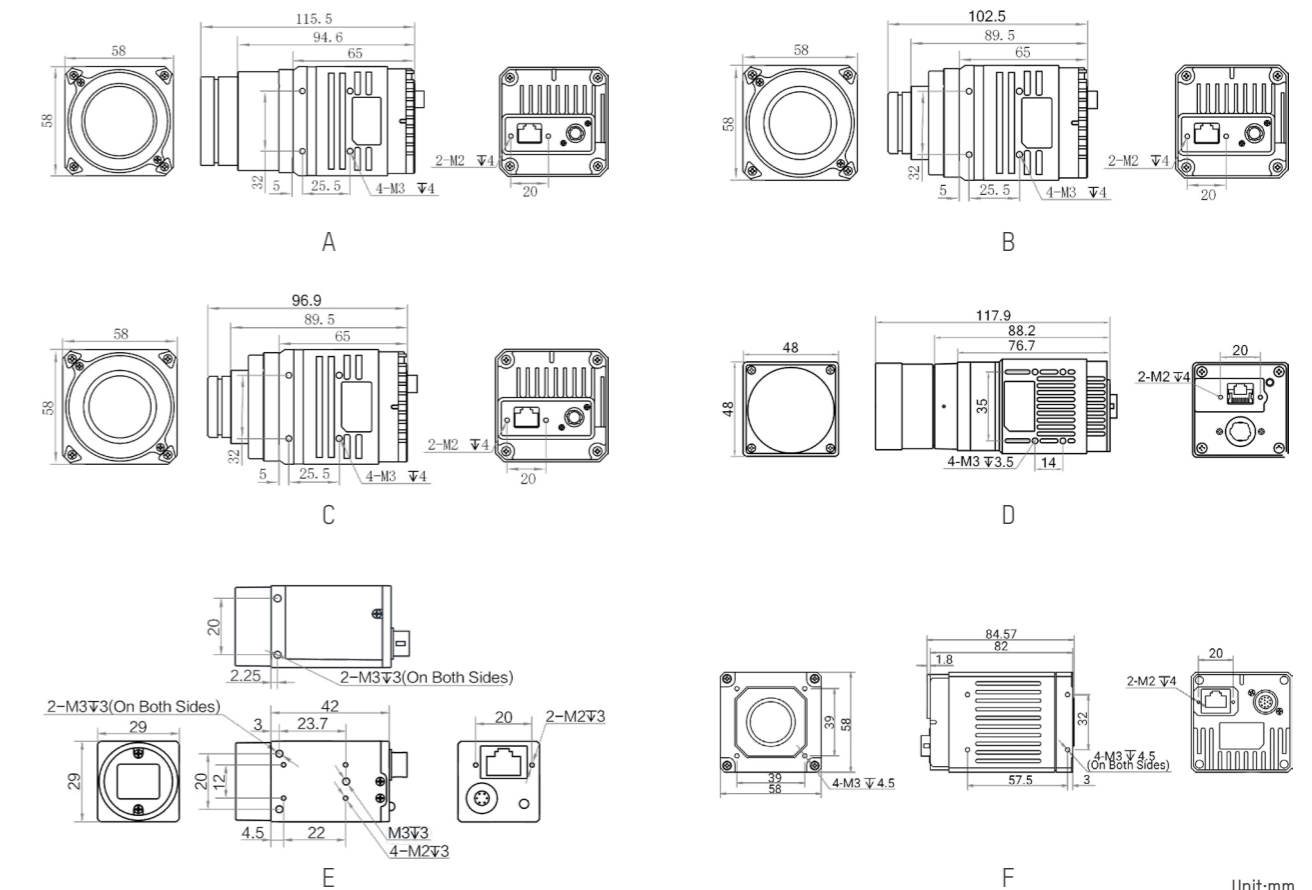


Specifications

Model	Observation/Thermometry	Temperature measurement range	Temperature measurement accuracy	Spectral range	Resolution	Max. frame rate	NETD	Label
MV-CI003-GL-N6	Observation	/	/	8-14 μm	640 × 512	50 fps	< 35 mk (F1.0, 25°C)	A
MV-CI003-GL-N15	Observation	/	/	8-14 μm	640 × 512	50 fps	< 35 mk (F1.0, 25°C)	B
MV-CI003-GL-N25	Observation	/	/	8-14 μm	640 × 512	50 fps	< 35 mk (F1.0, 25°C)	C
MV-CI003-GL-N35	Observation	/	/	8-14 μm	640 × 512	50 fps	< 35 mk (F1.0, 25°C)	A
MV-CI003-GL-T6	Thermometry	-20°C -150°C / 0°C -550°C	±2°C / read±2% (take great value)	8-14 μm	640 × 512	50 fps	< 50 mk (F1.0, 25°C)	D
MV-CI013-GS-NN *	/	/	/	/	1280 × 1024	91 fps	/	E
MV-CI013-GS-TF	/	/	/	/	1280 × 1024	91 fps	/	F

Notice: * will be released soon
Lens replacement not supported

Dimension



Unit:mm